



# Hockey Hong Kong China

Women's Section AGM  
23rd June 2025



# 2024/25 League at a glance

## Teams

1 New Club : Solo

---

2 withdraws : LHT B / Sirius B

---

Club alliances : Phoenix & Solis, Aquila & Solo, Dutch & Skyers

---

## General

64.7% reduction in league walkovers

---

Core/Non-core Byelaws

---

GK Passport

---

# Statistics

	<b>22/23</b>	<b>23/24</b>	<b>24/25</b>
<b>Average Age</b>	<b>30.66</b>	<b>31.86</b>	<b>32.60</b>
<b>Number of Players</b>	<b>826</b>	<b>849</b>	<b>841</b>
<b>Number of U21 Players</b>	<b>188</b>	<b>188</b>	<b>169</b>

# How did we support the development of the sport this year?



We facilitated

## Inclusiveness

Inclusion of both passport / non-passport holders in development and performance levels

## Female umpires

Umpiring initiatives to support more female umpires in league



We ran

## Goalkeeper Courses

To increase standard of specialist positions



We built

## Stronger player pathways

Bauhinia A, Bauhinia B, HKUHC



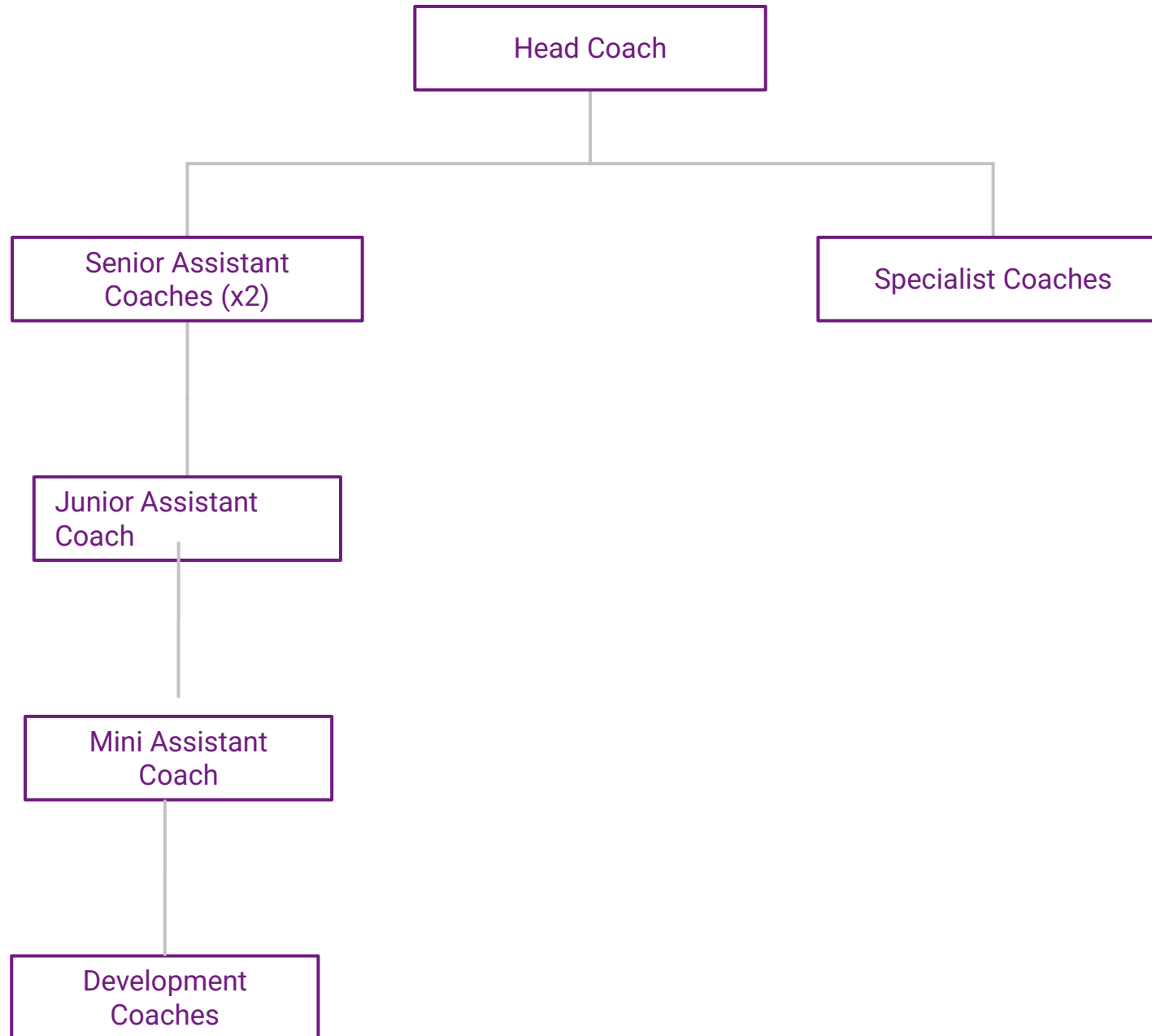
# National Player Pathway



U12

U21

Senior Squad



Looking forward  
to next year...

## Our focus for 25/26

### Byelaws

For Core / Non-Core

### Youth

Attraction and Retention

### Standard

Increase standard of play,  
especially in Premier division

### GK Camps

Increase the standard of  
specialist positions

### Speed

Of committee and office  
communications

### Fixtures

Shorter playing year

...if you have more, let us know!

## Spotlight on

# The WS Committee: what we do and how we work

01

### We look after:

- Bye-laws
- Adherence to bye-laws
- Club requests
- Anything that impacts women's hockey in HK
- ...There is a sub-committee who looks after the National Team

02

### We love it when...

You include lots of context and information on your requests – it helps us come to the most informed decision

03

### We meet

- Monthly, from 7pm 'til...late

04

### Factors that inform decisions

- Bye-laws
- Precedent
- Context and relevant information
- Impact on community